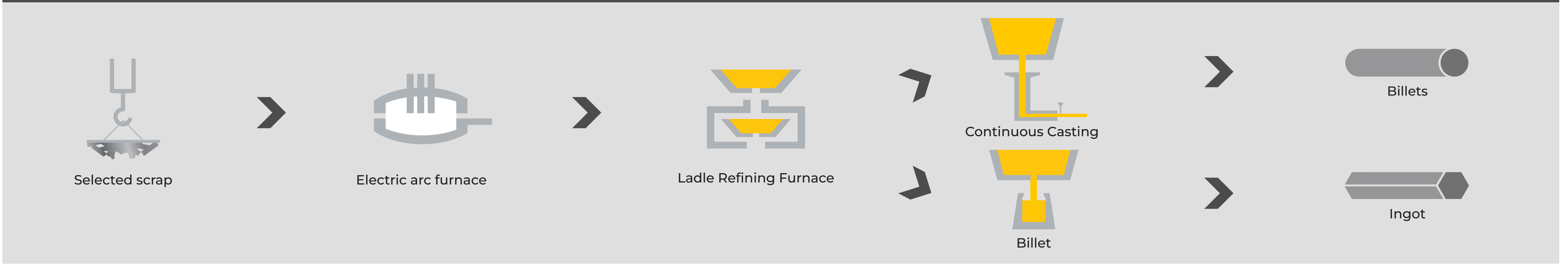
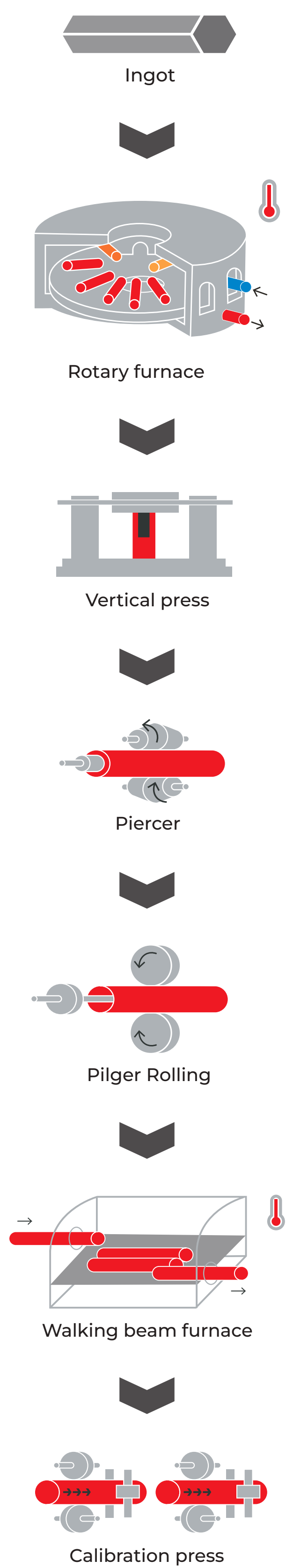


STEEL MILL

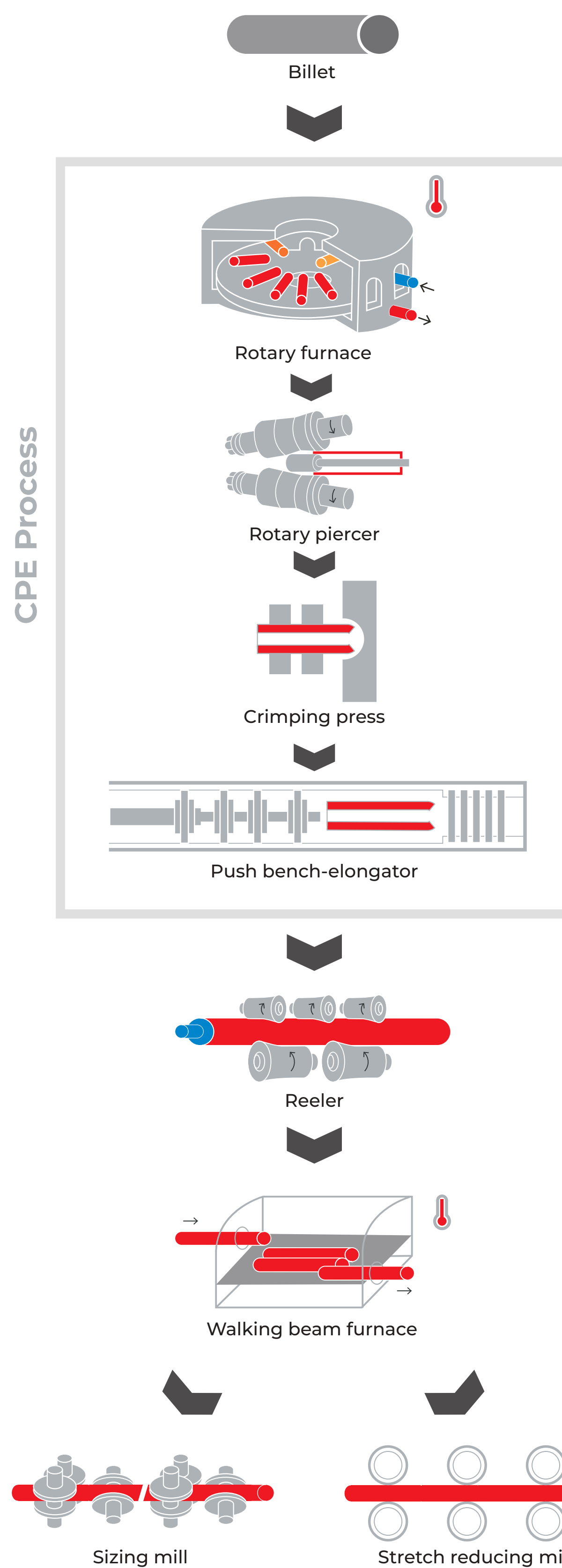


28' STAINLESS STEEL, HIGH-ALLOY AND CARBON STEEL TUBE PRODUCTION 1/4'

PILGER

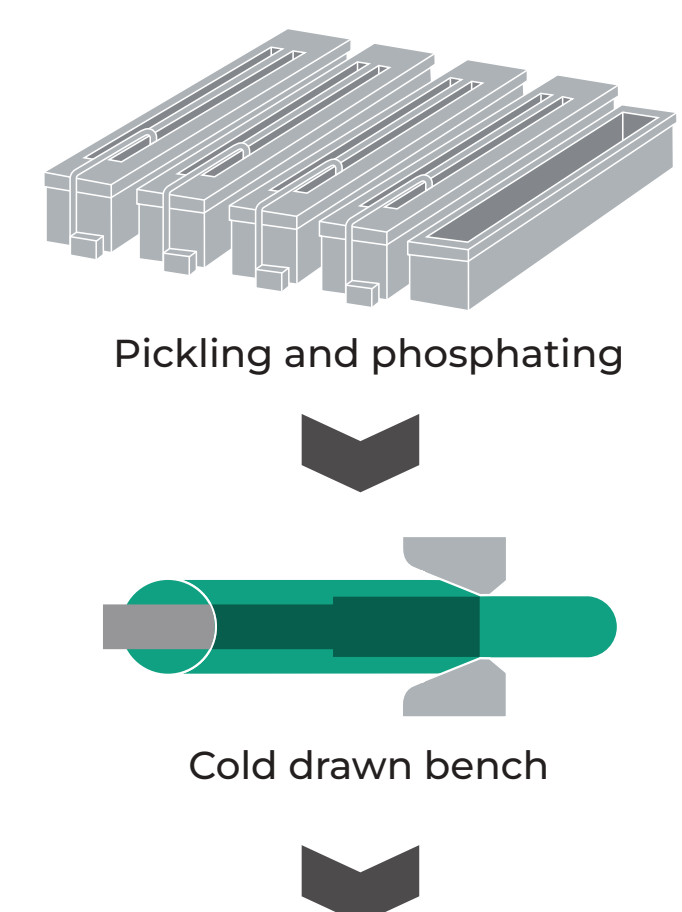


HOT ROLLING



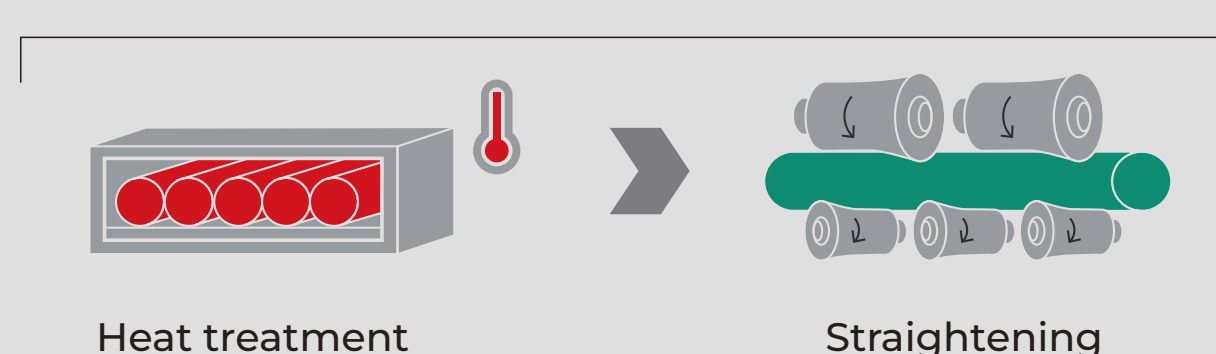
CPE Process

COLD ROLLING

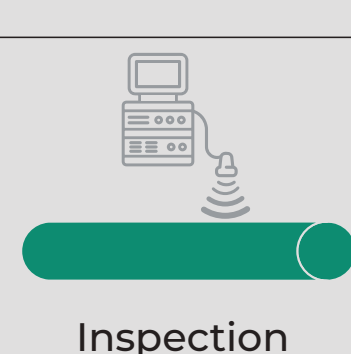


FINISHING LINE

Finishing



Testing (NDT) Inspection



Packing and Transporting

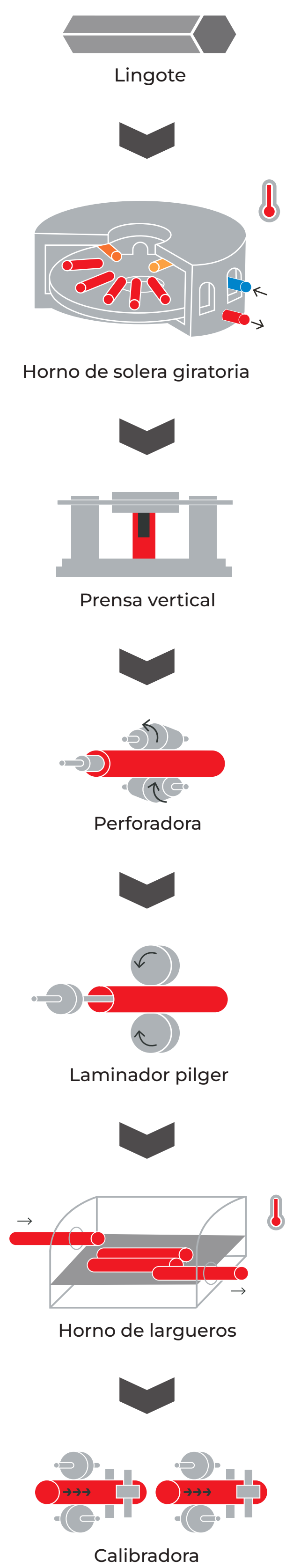


ACERÍA

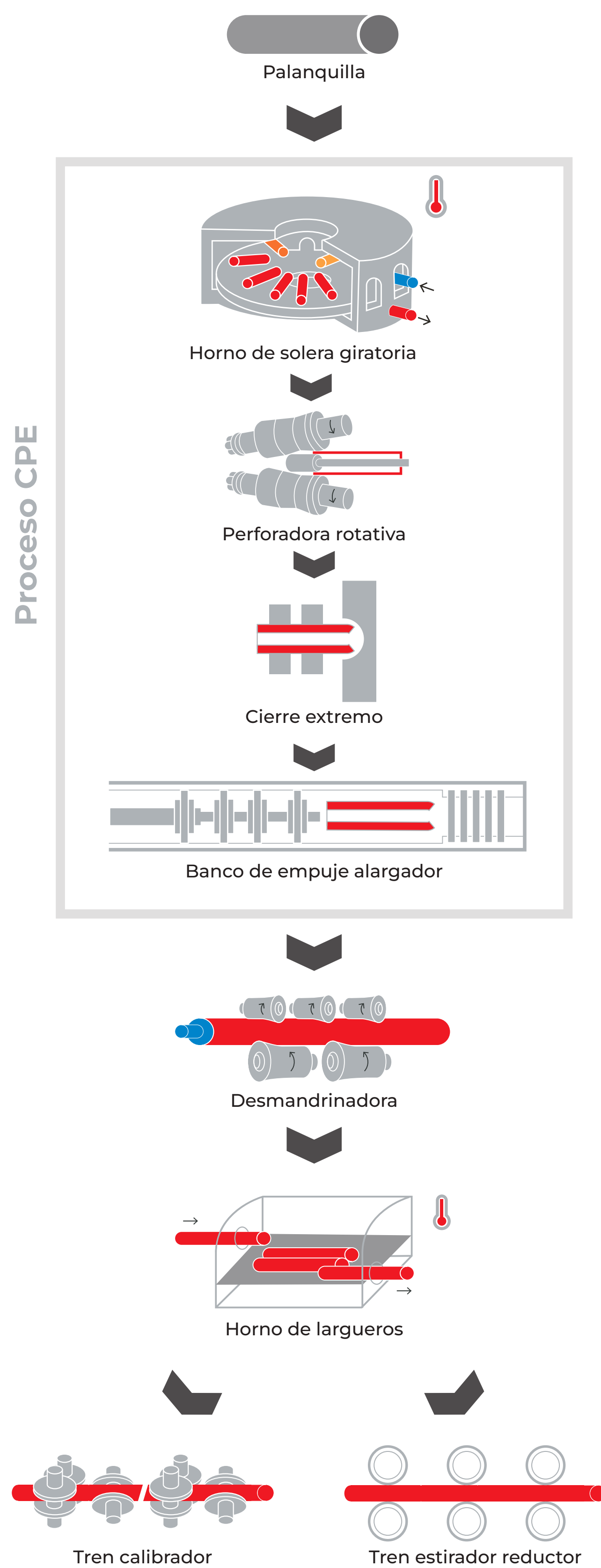


28' PRODUCCIÓN DE TUBOS EN ACERO INOXIDABLE, ALEADOS Y AL CARBONO 1/4'

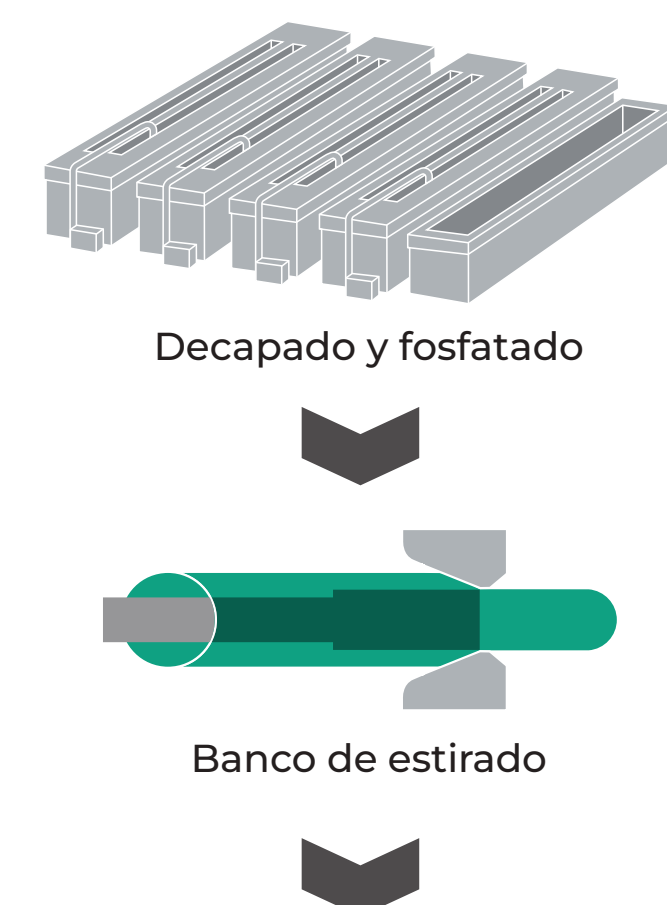
PILGER



LAMINADO CALIENTE



LAMINADO EN FRÍO

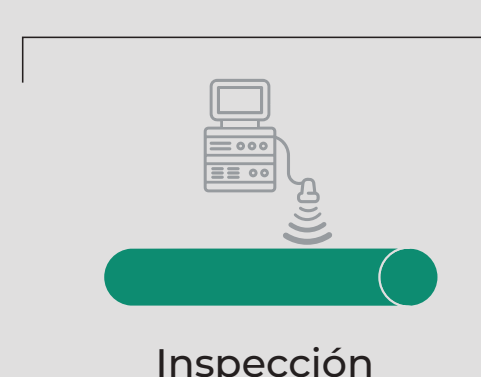


PREPARACIÓN FINAL

Acabados



Ensayos (END) Inspección



Preparación y Transporte

